

# Demography and development in the maze of Indian districts



*Un forte contrasto tra gli indicatori demografici e di sviluppo emerge da una recente analisi dei 640 distretti dell'India, che Sanjay K. Mohanty, Udaya S. Mishra, Rajesh K. Chauhan e Sayantani Chatterjee riassumono per N-IUSSP. La crescita della popolazione, il rapporto tra i sessi, l'invecchiamento e il rendimento scolastico rispondono ai livelli di sviluppo locali, sebbene non sempre in modo lineare. Le disparità di genere nell'istruzione, che persistono oltre il livello primario, sono diffuse in tutto il paese.*

India is probably known to most N-IUSSP readers for its macro characteristics, which are often compared to those of other large developing countries, as in Table 1. The picture that emerges is mixed: a synthetic measure like the human development index (HDI) indicates that India occupies an intermediate position, behind Brazil, China, and Indonesia, but ahead of Bangladesh, Pakistan, and Nigeria.

**Table 1:** Selected demographic and development indicators in seven large developing countries, 2018

Country	Population (million)	Annual growth rate	TFR	$e_0$	Schooling (average, years)	GNI per capita (US\$)	HDI	Rank in HDI	Gini Index
India	1 339.2	1.1	2.3	68.8	6.4	6 353	0.640	129	35.1
Pakistan	197.0	1.9	3.4	66.6	5.2	5 311	0.562	149	30.7
Bangladesh	164.7	1.0	2.1	72.8	5.8	3 677	0.608	138	32.4
China	1 409.5	0.4	1.6	76.4	7.8	15 270	0.752	86	42.2
Indonesia	264.0	1.1	2.3	69.4	8.0	10 846	0.694	115	39.5
Brazil	209.3	0.8	1.7	75.7	7.8	13 755	0.759	79	51.3
Nigeria	190.9	2.6	5.4	53.9	6.2	5 231	0.532	156	43.0

**Notes.** TFR= Total Fertility Rate (children per woman);  $e_0$ =Life expectancy at birth HDI = Human Development Index

**Source:** UNDP, Human Development Report 2018

This article, however, does not set out to compare India internationally; rather, it focuses on its internal heterogeneity, which is extremely high - higher than what most N-IUSSP readers probably imagine. Indeed, the famous north-south dichotomy is not limited to demography but concerns several key domains of human development, education, health and income. Regional differences and disparities with respect to each of these domains are analysed in depth in a recent book (Mohanty, Mishra and Chauhan 2019); here we highlight a few of the most interesting features that emerge.

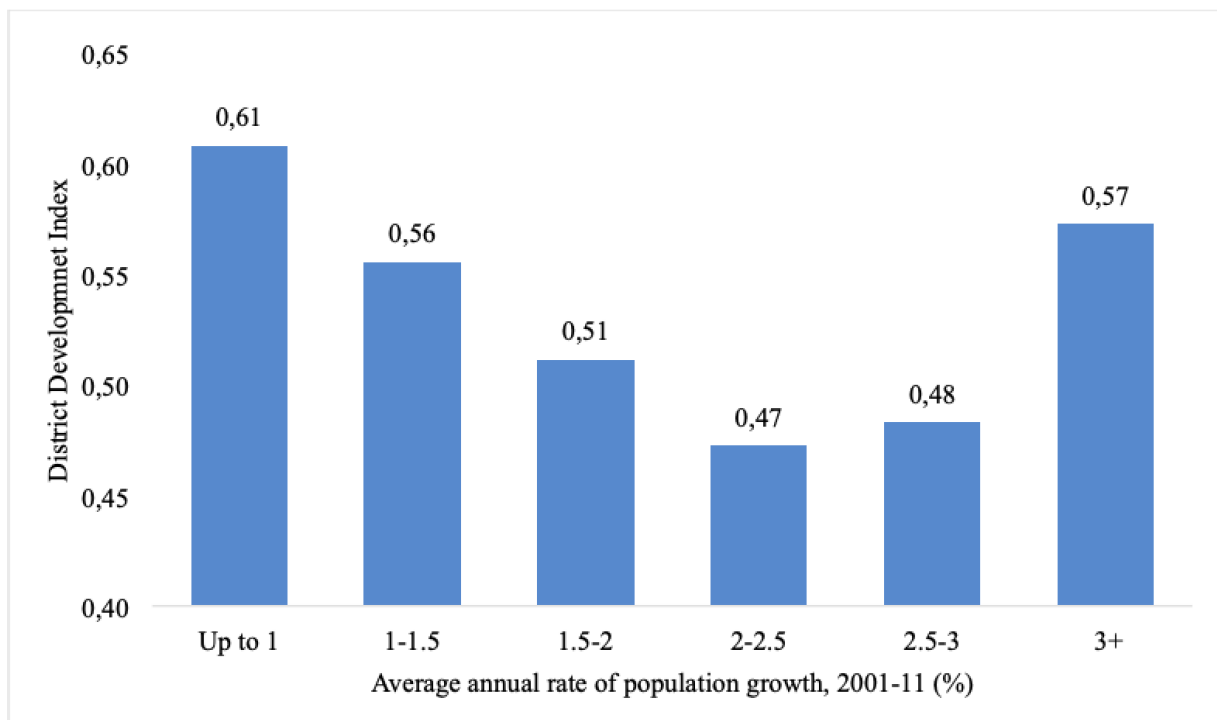
## 640 Indian realities

Our unit of analysis are the 640 Indian districts. These are reasonably large (some 2 million inhabitants each, on average) and at different stages of their demographic transition, with wide differences in terms of growth rate, age and sex structure, fertility, mortality, and migration. Not surprisingly, they also exhibit huge disparities in socio-economic development, which is here measured with the district development index (DDI), a composite indicator ranging between 0 and 1, which is analogous to the more famous HDI, and combines social, health and economic variables (Mohanty et al 2019).

Figure 1, illustrating the mean level of the DDI in 2011 across a range of population growth rates between 2001 and 2011, displays a very distinct U shape. Moderate population growth is associated with higher development; however, robust population growth rates characterize not only relatively backward areas (with high fertility), but also highly dynamic and urbanized districts, on the right of the scale,

because they attract migrants.

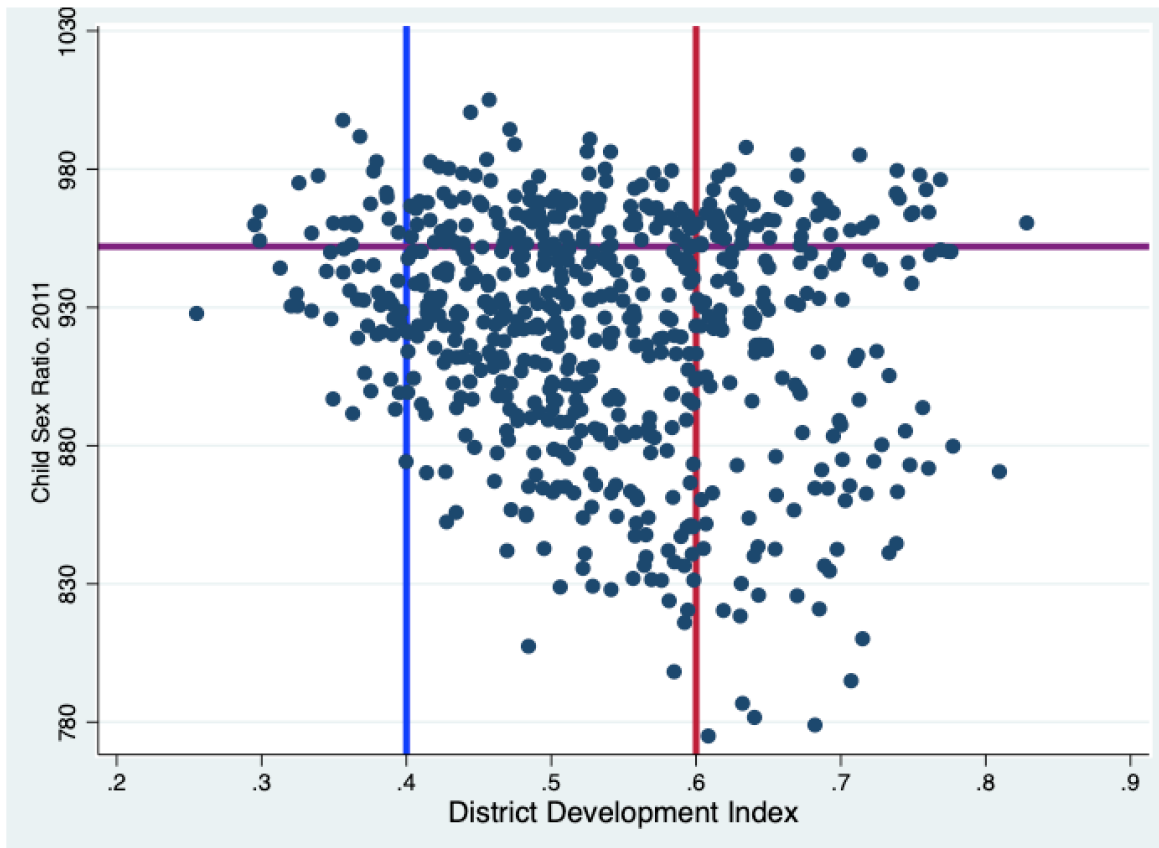
**Figure 1:** Mean scores of district development index by level of annual population growth in districts of India, 2001-2011



## Child sex ratio and level of development

Child sex ratio (CSR), defined as the number of girls per 1,000 boys aged 0-6, has been declining in India over the last two decades, and this is a major concern to both national and state governments. Figure 2 plots the CSR by DDI for the Indian districts in 2011. This indicator is very frequently below, sometimes largely below, its “expected” value of 952 (horizontal violet line). It is generally higher in less developed districts (DDI below 0.4), and tends to decrease in the more developed one (DDI above 0.6), although the trend is slightly masked by an increase in the variability of the phenomenon (right part of Figure 2). Son preference (which often translates into sex-selective abortion) is surely the main cause of this pattern: low fertility levels in a good number of the more developed districts are associated with (and lead to) low CSRs.

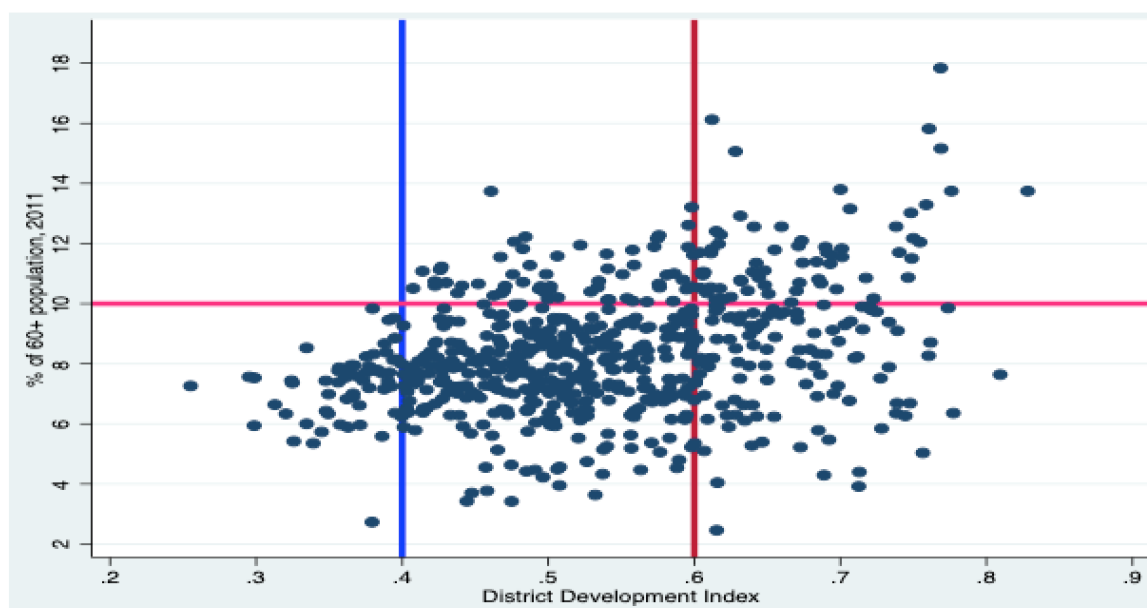
**Figure 2:** Scatter plot of child sex ratio and district development index in districts of India, 2011



## Changing age structure and level of development

Along with fertility transition and rising longevity, the size and share of the older population (e.g., aged 60 and over) is increasing in India. On average, districts with higher level of development have higher proportion of older adults (Figure 3). Districts where this share exceeds 10% (the horizontal line) typically have medium or high levels of development. Deviations from this pattern are probably caused by migration to the more developed districts, because migrants are typically of young working ages. Even here, however, declining fertility and improved survival will eventually lead to ageing: provision of healthcare, pensions and social support to the elderly will be a formidable challenge in the coming years.

**Figure 3:** Scatter plot of percentage of 60+ population and district development index in districts of India, 2011

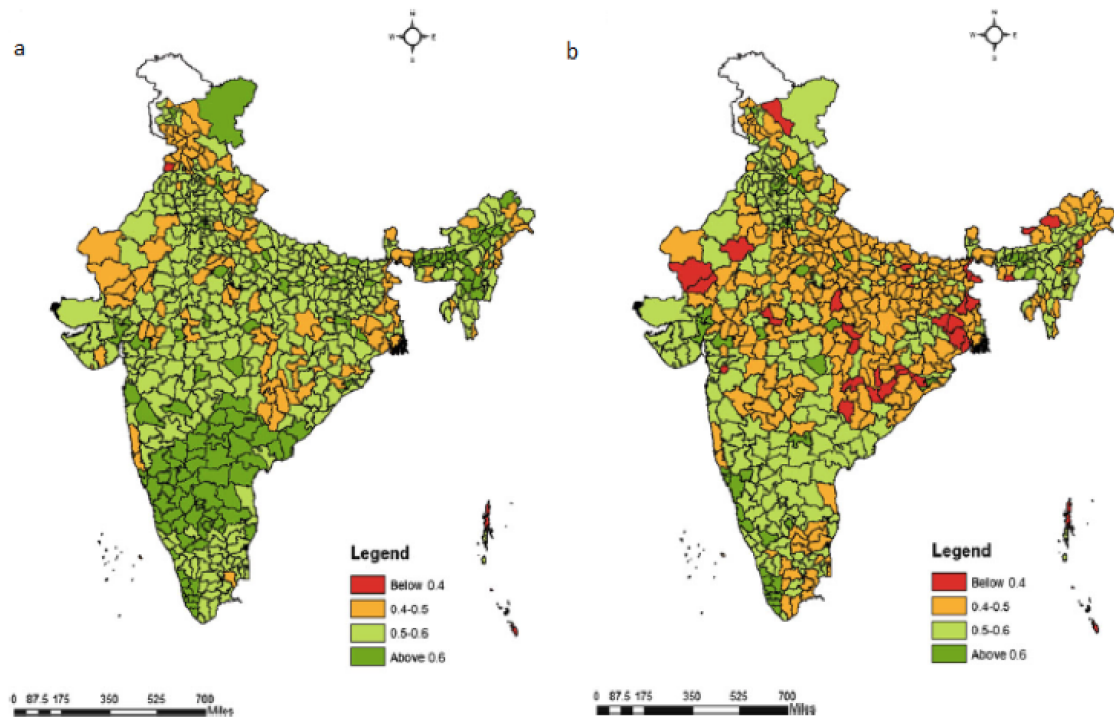


## Gender differentials in educational progression

The conventional educational indicators fail to capture the geographical variations and gender gap in educational progress in India. For instance, while gender gaps in literacy and primary enrolment are narrowing, they remain disparate at higher educational levels. This is clearly shown by a gendered analysis of the Educational Progression Ratio (EPR), the probability of attaining higher secondary level by those who completed their junior secondary education (Chatterjee and Mishra, 2019).

As Figure 4 shows, inter-district variations in EPR are extremely large and responsive to the differential levels of development across districts. However, at all levels of DDI, EPRs are consistently lower for females than for males.

**Figure 4:** Educational progression ratios of attaining higher secondary from lower secondary in districts of India, 2011 [(a) Males; (b) Females]



Source: Chatterjee and Mishra (2019).

## Conclusions

Districts of India remain highly heterogeneous in both demographic and development terms, with no apparent signs of convergence, yet. As the divergence is not limited to the few dimensions illustrated here, the need for policy intervention arises. In our opinion, the key dimensions on which to intervene, among the many that are needed, are:

- 1) arrest population increase, especially in rapidly growing districts,
- 2) put special emphasis on gender equity, and
- 3) identify districts with an urgent need for development intervention, within and across states.

Without these, or similar, policy actions, there are reasons to fear that the already existing, profound inequalities of the country will soon grow even larger.

## References

Chatterjee S., & Mishra U.S.(2019). Educational Development and Disparities in India: District-Level Analyses. In *The Demographic and Development Divide in India* (pp. 259-328). Springer, Singapore.

Mohanty S. K., Mishra U.S. & Chauhan R.K. (2019). *The Demographic and Development Divide in India*. Springer, Singapore.

Mohanty S.K., Dehury B., Mishra U.S., Dash A. & Singh R.R. (2019). Spatial Pattern of Development in Districts of India. In *The Demographic and Development Divide in India* (pp. 509-551). Springer, Singapore.